

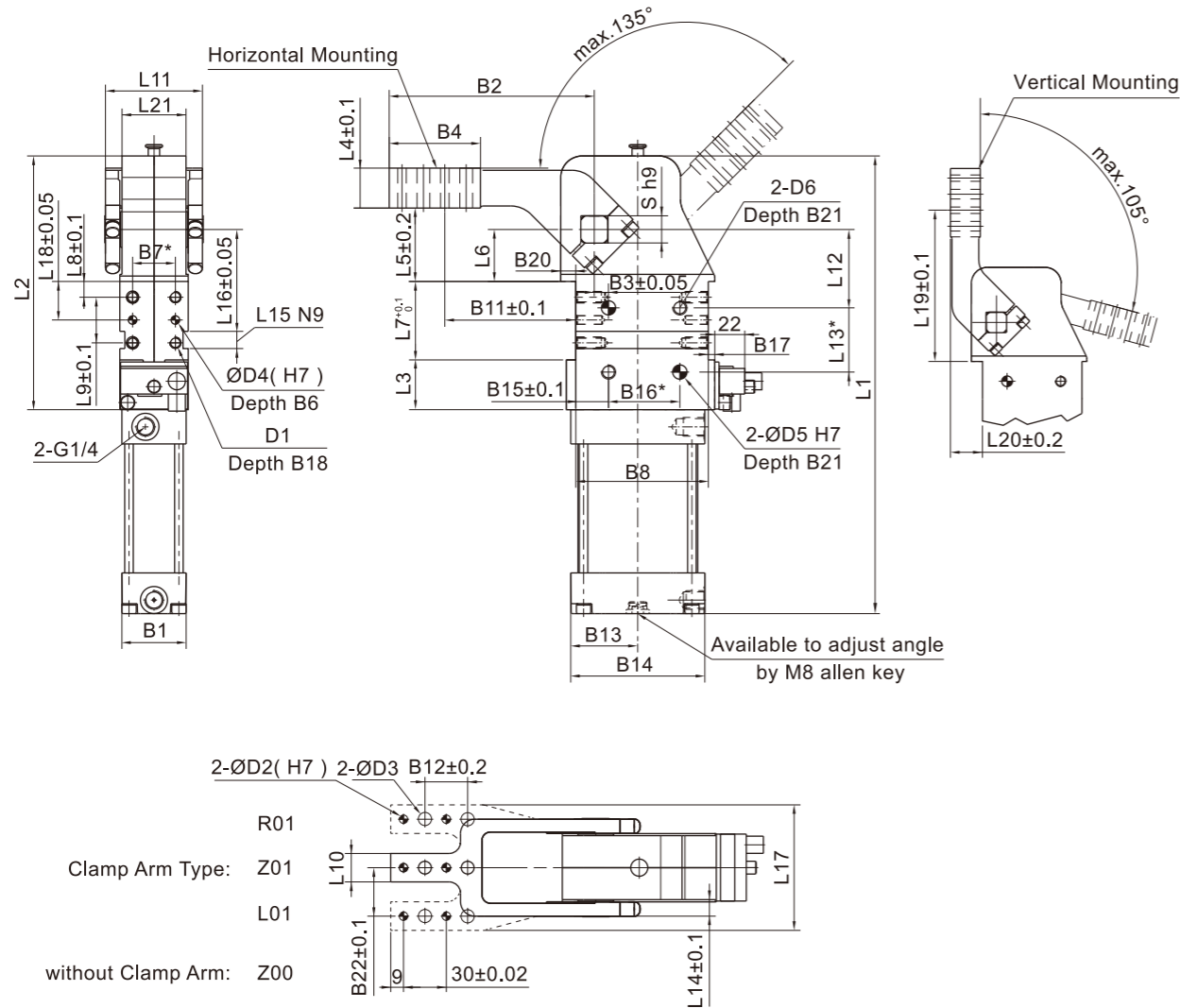
Power Clamp - Stepless Adjustable  
AKUS 40 - 80 Series

Power Clamp - Manual & Pneumatic  
AKUH 50 - 80 Series



Ext. Dimensions [ mm ]

• AKUS 50~80 Inductive Sensor



Bore	B1	B2	B3	B4	B5	B6	B7	B8	B9	B10	B11	B12	B13	B14	B15	B16
50	45	144	10	65	6.5	12	30	93	9	30	92	30	47	94	23	50
63	54	144	10	65	7.5	12	30	93	9	30	92	30	54	106	23	50
80	76	179	15	65	8	12	50	134	9	30	119	30	70	140	36	70

Bore	B17	B18	B19	B20	B21	B22	D1	D2	D3	D4	D5	D6	L1	L2	L3	L4
50	4.5	12	3.5	10.5	12	34	M8	6	9	8	10	M10	281	178	35	28
63	7.5	12	3.5	12	12	37	M8	6	9	8	10	M10	188	185	35	28
80	8	15	3.5	20	13	50.5	M10	6	9	8	12	M12	424	270	55	35

Bore	L5	L6	L7	L8	L9	L10	L11	L12	L13	L14	L15	L16	L17	L18	L19	L20	L21	S
50	51.5	36.5	55	11	32	20	68	55	45	10	12	71.5	78	27	141.5	30	45	19
63	51.5	36.5	55	11	32	20	78	55	45	10	12	71.5	86	27	141.5	30	52	22
80	70	50	80	15	50	25	108	65	75	12.5	12	96.5	117	40	190	34	74	30

\* Tolerance for dowel holes ±0.02; Tolerance for threaded holes ±0.1; External flow control valves must be installed, which should be purchased separately.

Features

1. Knee-lever mechanism design, with high clamping force.
2. Stepless adjustable opening angle.
3. It can be controlled by pneumatic or manual.
4. Self-locking at clamping position.
5. Available for mounting on four surfaces.
6. Intergrated sensing system.
7. Various arm types to meet customers' requirements.



Specifications

Bore	mm	50	63	80
Action		Double Acting		
Fluid		Compressed Clean Air		
Max. Operating Pressure	MPa ( kgf/cm <sup>2</sup> )	0.6 ( 6.1 )		
Operating Temperature Range	°C	-10 ~ 60 ( No Freezing )		
Lubrication <sup>①</sup>		Not Required		
Clamping Moment <sup>②</sup>	N·m	160	380	800
Max. Locking Moment	N·m	800	1500	2500
Min. Operating Frequency		1s clamping or 1s opening		
Opening Angle Range		5° ~ 120°(Stepless Adjustable)		
Mass	kg	3.8	5	17
Port	G	1/4		

Note: ① Use only Turbine Oil ISO VG32 for lubricant, if required; ② Means clamping moment at pressure 0.5MPa.

Order Code

AKUH		V		63		-		Z01		W12		
Series	Arm Mounting Type <sup>①</sup>	Bore mm		Clamp Arm Type <sup>②</sup>		Sensor <sup>③</sup>						
	Blank	Horizontal		50	Ø50	Z00	Without					
	V	Vertical		63	Ø63	R01	Right Side					
				80	Ø80	Z01	Middle					
						L01	Left Side					
						W00 <sup>⑦</sup>	Without Sensor					
						W12	M12 Inductive Sensor PNP					
						W12N	M12 Inductive Sensor NPN					
						W12T	M12 Inductive Sensor PNP (Anti-magnetic)					
						W05	Pneumatic Control Type					

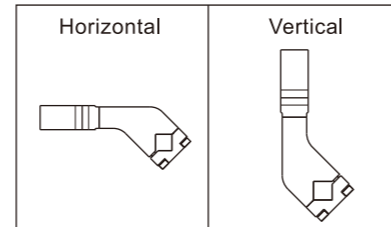
ER		C		105	
Optional <sup>④</sup>		Sensor Cover <sup>⑤</sup>		Opening Angle <sup>⑥</sup>	
Blank	Without	Blank	Without	5°~120° optional	
ER	Stopper Right	C	Sensor Cover		
EL	Stopper Left				

- Note:
- Refer to the definition of clamping arm mounting type.
  - Others clamp arm types refer to configuration sheet, Clamp arm dimensions refer to page 1.06.07.
  - Sensors parameters refer to page 1.06.06.
  - Suitable to power clamp with bore 50 / 63; Opening angle available for 30°/45°/60°/75°/90°/105°/120°/135°.
  - Normally used on manual operating position for protecting sensor.
  - When clamp arm mounted vertically, max. opening angle is 105°. When clamp arm mounted horizontally, max. opening angle is 120°.
  - Default : Conductive Cylinder's body.

Order Example

Bore: 63mm; Opening Angle 35°; Standard Clamp Arm; Dowel Hole Ø6; Middle Type; Horizontal Mounting; Inductive Sensor PNP.  
Order Code: AKUH63-Z01W12-35

Clamp Arm Mounting Type Definition



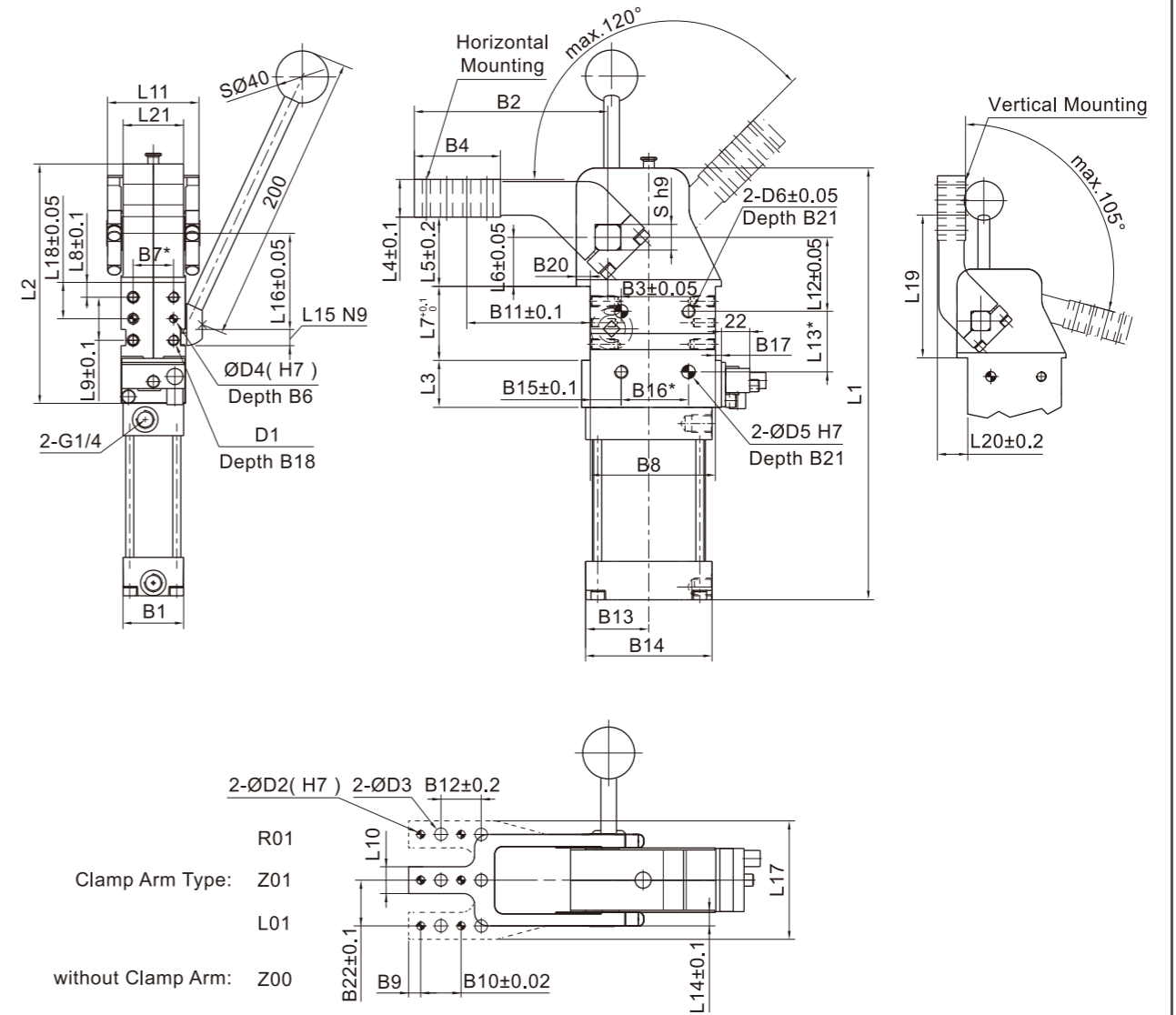
Clamp Arm Configuration

Unit: ( mm )

Bore	Standard Clamp Arm ( Dowel Hole Ø6 )			Clamp Arm Offset 45 ( Dowel Hole Ø6 )			Clamp Arm Offset 45 ( Dowel Hole Ø8 )			Standard Clamp Arm ( Dowel Hole Ø8 )		
	R	M	L	R	M	L	R	M	L	R	M	L
50												
63	R01	Z01	L01	R02	Z02	L02	R03	Z03	L03	R04	Z04	L04
80												

Ext. Dimensions ( mm )

AKUH 50 - 80 Inductive Sensor



Bore	B1	B2	B3	B4	B5	B6	B7	B8	B9	B10	B11	B12	B13	B14	B15	B16
50	48	144	10	65	6.5	10	30	93	9	30	92	30	47	94	23	50
63	54	144	10	65	7.5	10	30	93	9	30	92	30	54	106	23	50
80	76	179	15	65	8	12	50	134	9	30	119	30	70	140	36	70

Bore	B17	B18	B19	B20	B21	B22	D1	D2	D3	D4	D5	D6	L1	L2	L3	L4
50	4.5	11	3.5	10.5	12	34	M8	6	9	8	10	M10	321	178	35	28
63	7.5	11	3.5	12	12	37	M8	6	9	8	10	M10	361	211	61	28
80	8	15	3.5	20	13	50.5	M10	6	9	8	12	M12	488	270	55	35

Bore	L5	L6	L7	L8	L9	L10	L11	L12	L13	L14	L15	L16	L17	L18	L19	L20	L21	S
50	51.5	36.5	55	11	32	20	68	55	45	10	12	71.5	78	27	141.5	30	45	19
63	51.5	36.5	55	11	32	20	78	55	45	10	12	71.5	86	27	141.5	30	52	22
80	70	50	80	15	50	25	108	65	75	12.5	12	96.5	117	40	190	30	74	30

\* Tolerance for dowel holes ±0.02; Tolerance for threaded holes ±0.1;  
External throttle check valves and 3 Way 5 Port exhaust valves (exhaust center) must be installed during assembly, which should be purchased separately.  
Hand lever kit will be provided and customers shall assemble on site. Hand lever can be mounted on both sides of cylinder. Weld position of hand lever is up to customers.